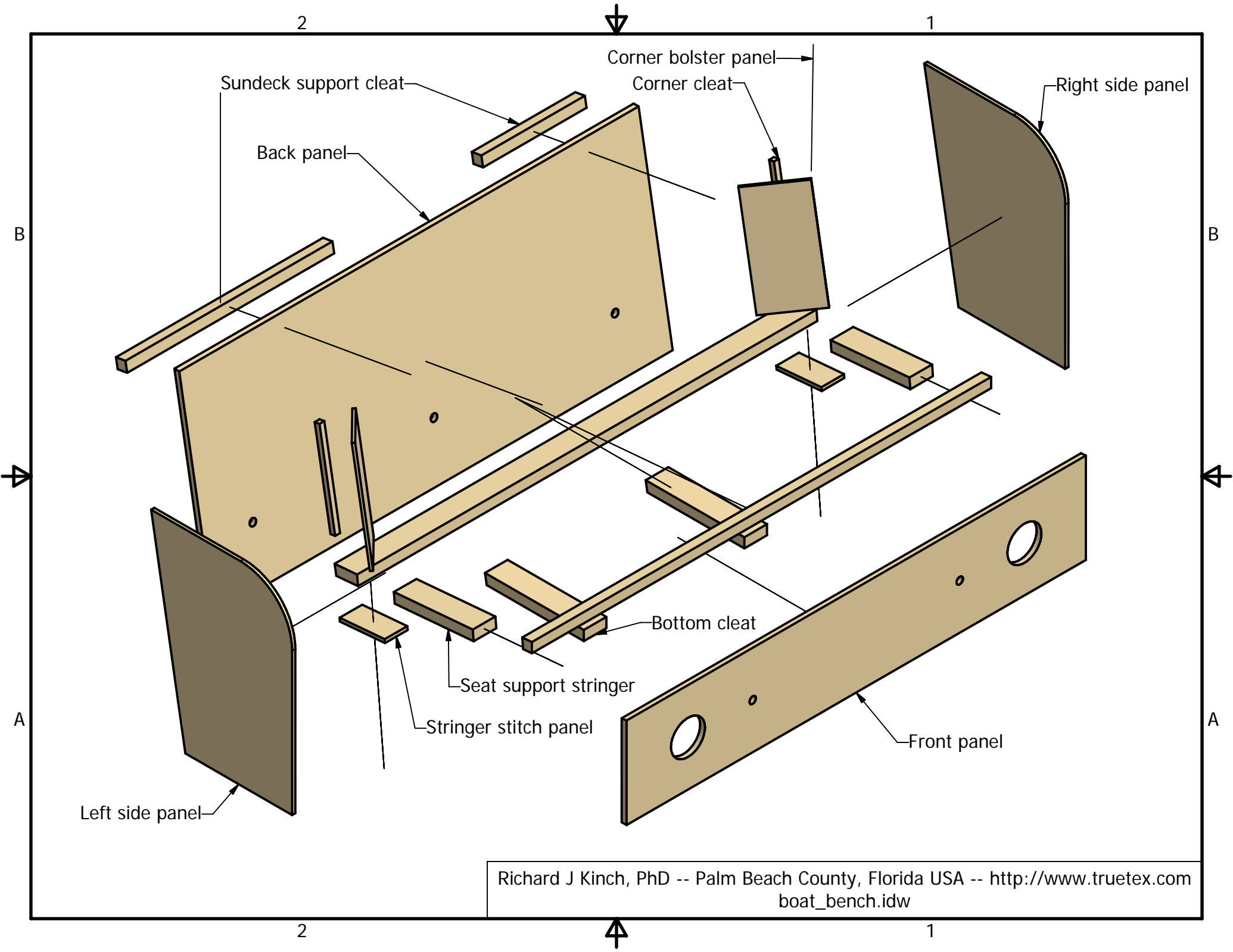
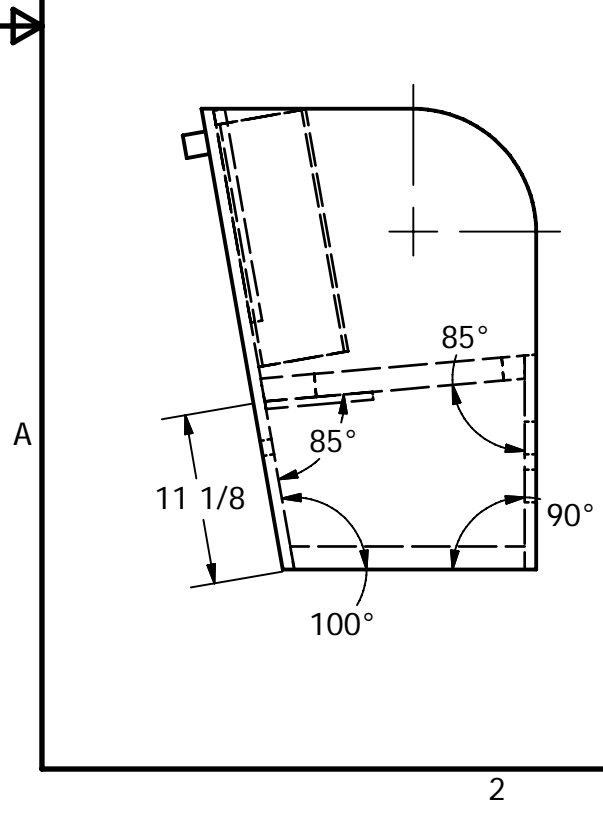
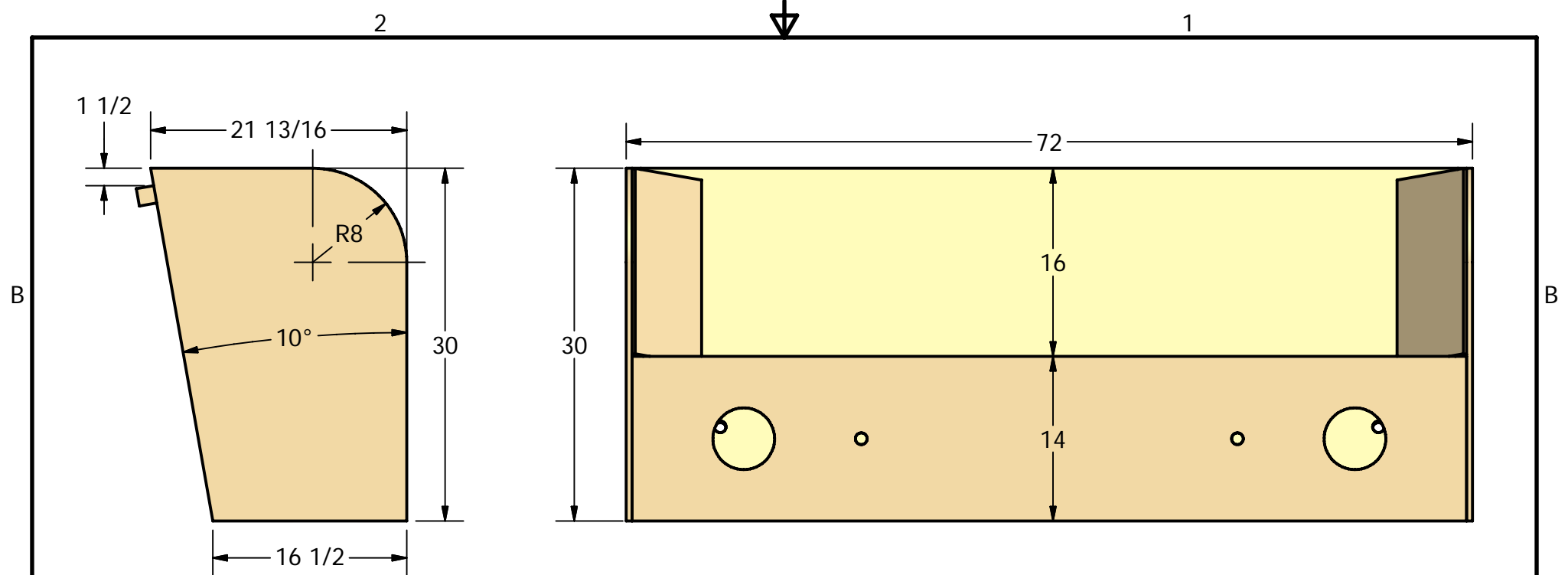


Richard J Kinch, PhD -- Palm Beach County, Florida USA -- <http://www.truetex.com>  
boat\_bench.idw



Richard J Kinch, PhD -- Palm Beach County, Florida USA -- <http://www.truetex.com>  
boat\_bench.idw

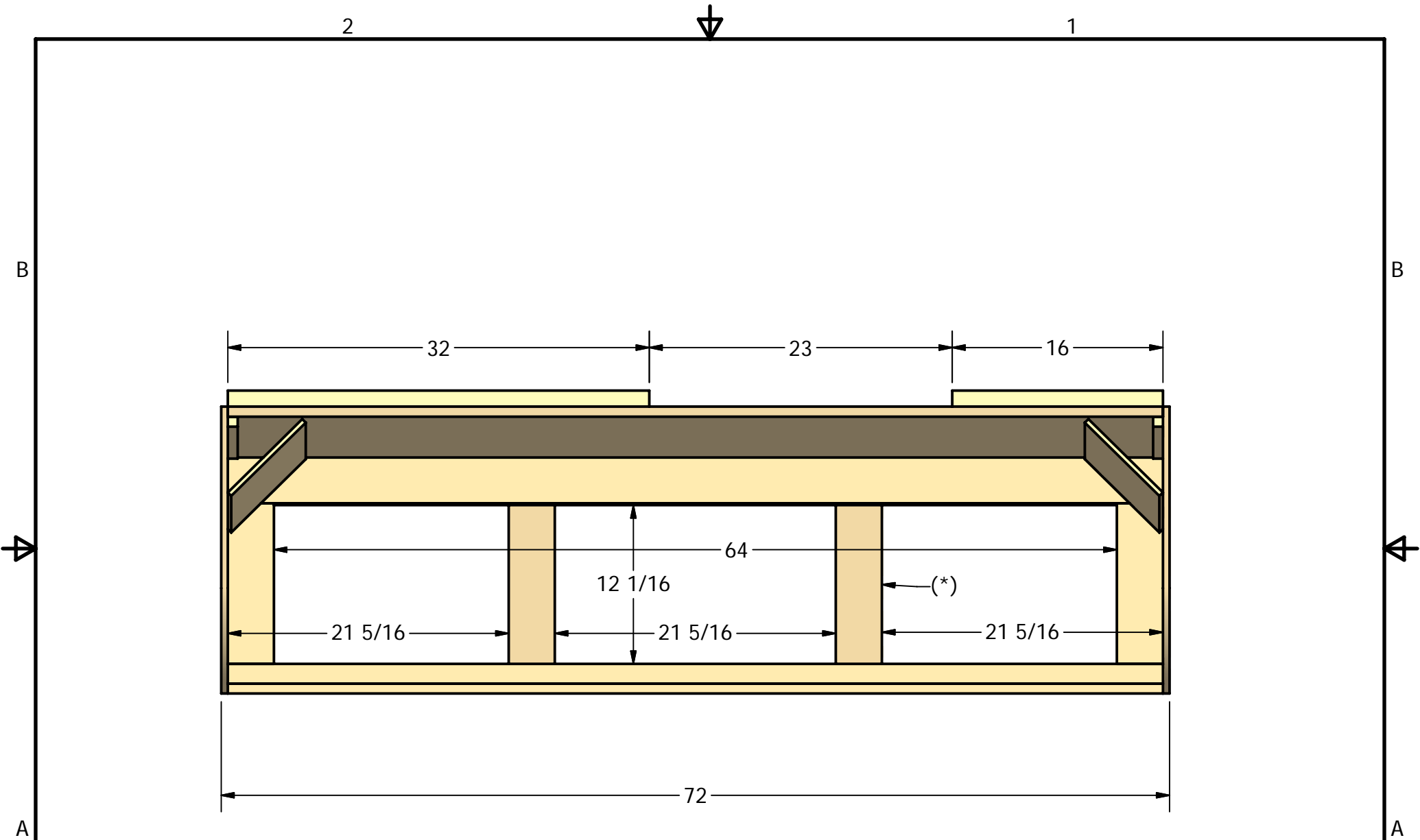


PRE-ASSEMBLY and FASTENER NOTES

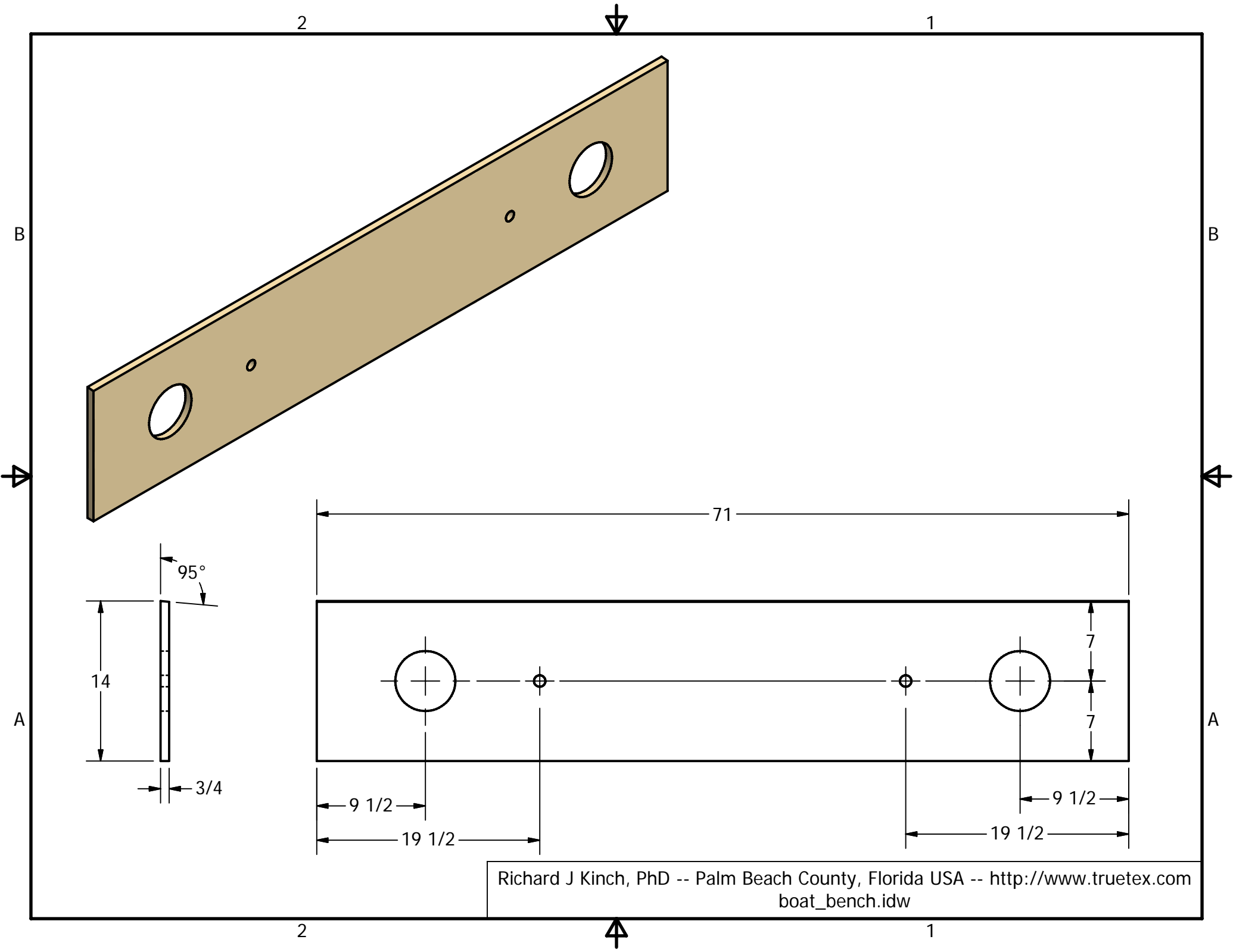
For wet marine environments, the following will maximize the durability of this assembly. Apply a thin coat of 3M 5200 marine adhesive/sealant to the bottom edges of the plywood panels. This will deter capillary waterlogging through the end grain. Apply a marine polyurethane primer to other surfaces within at least 6 inches of the bottom.

Use marine grade plywood if possible. This will provide minimal interply voids, and water-resistant wood species and ply adhesion.

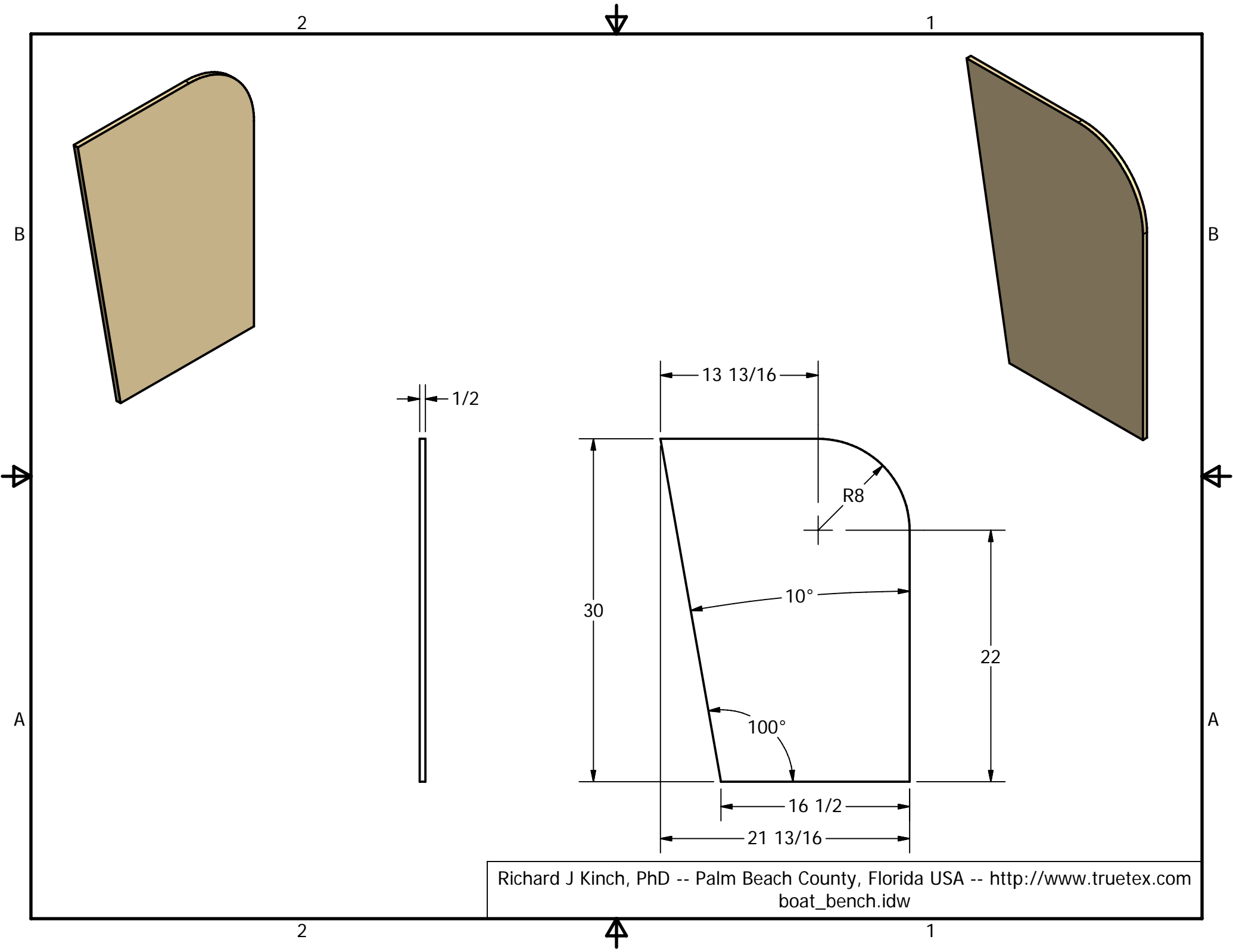
Assemble first the basic box of front, back, and sides with #10 x 2-inch oval head stainless steel screws and finishing washers. Pre-drill first panel 5/32 and second panel #30. Align panels carefully before pre-drilling. After the basic box is assembled, apply 18-gauge narrow-crown (1/4") by 1-1/2" stainless staples every 3 inches or so. Fasten corner bolster panels with staples only. Fasten stringers and cleats similarly with screws and staples.



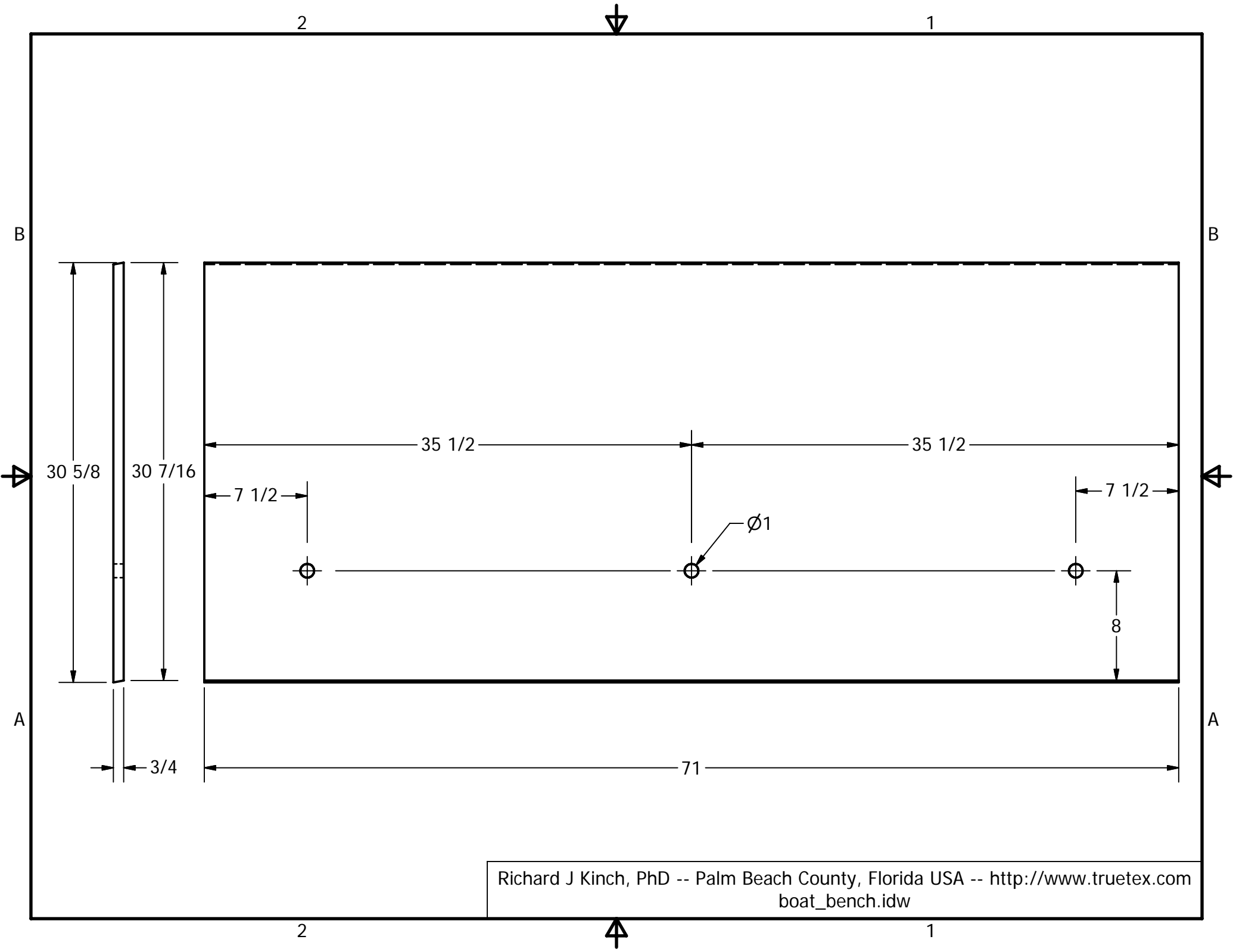
\* Bottom cleat(s) should be positioned for best deck anchorage.



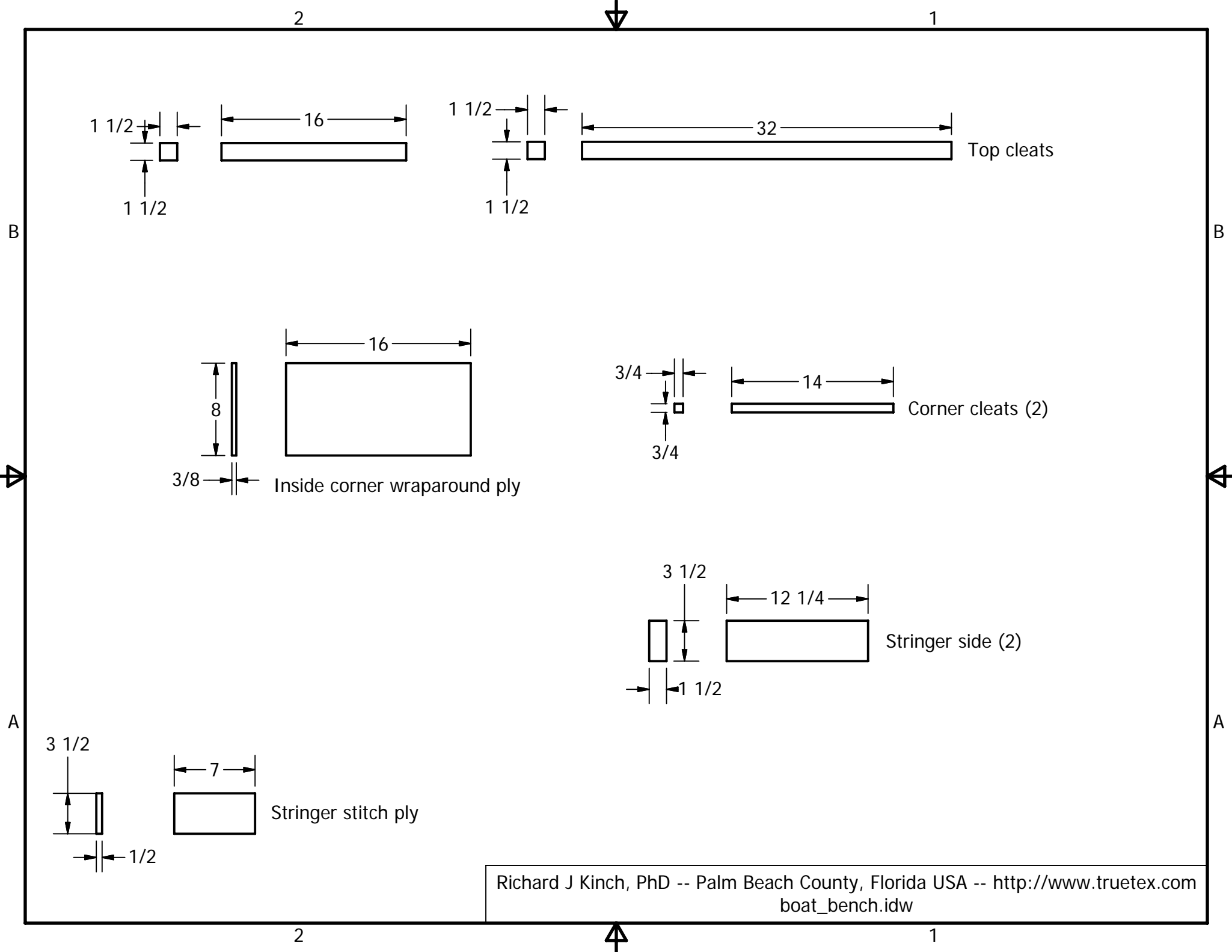
Richard J Kinch, PhD -- Palm Beach County, Florida USA -- <http://www.truetex.com>  
boat\_bench.idw



Richard J Kinch, PhD -- Palm Beach County, Florida USA -- <http://www.truetex.com>  
 boat\_bench.idw

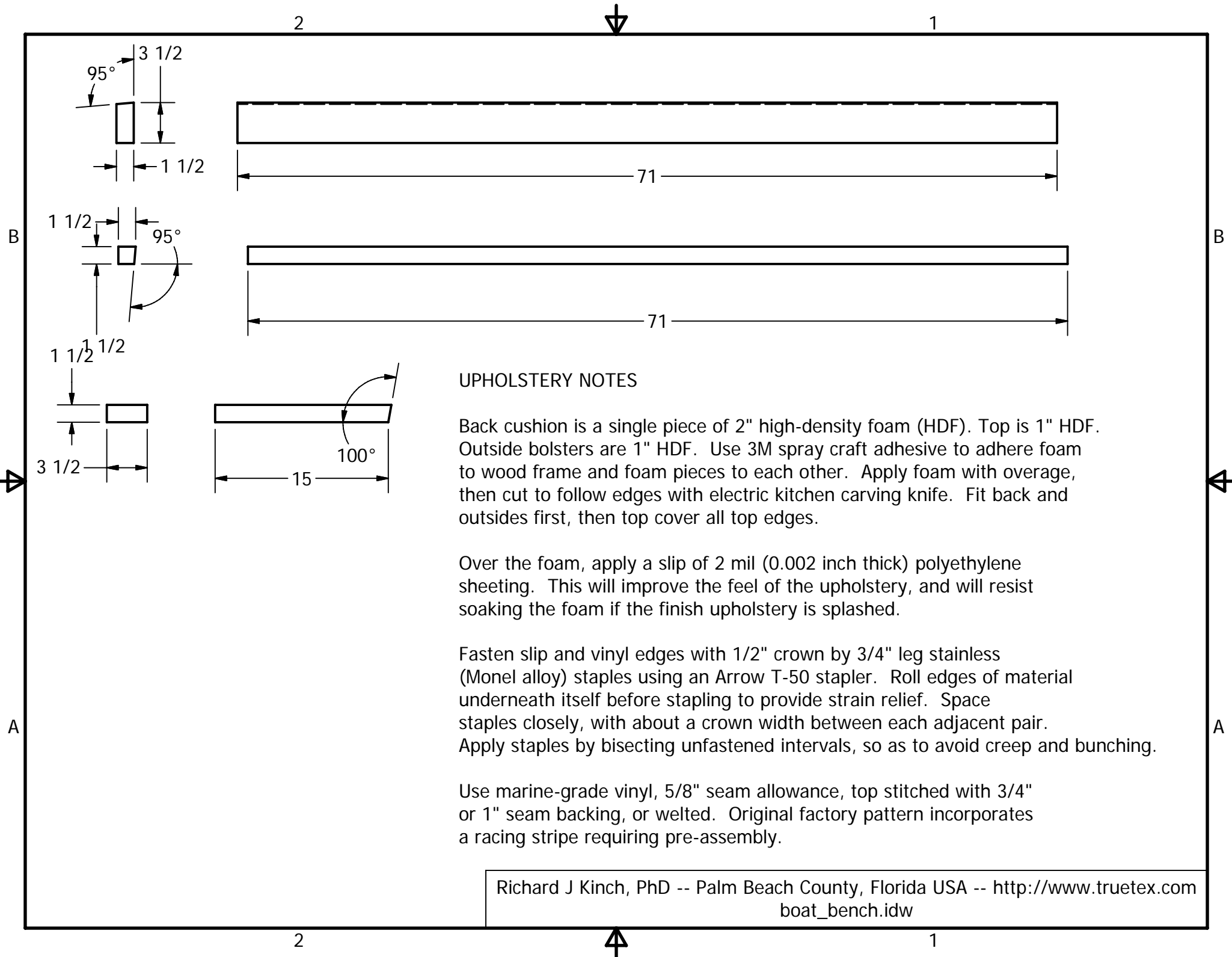


Richard J Kinch, PhD -- Palm Beach County, Florida USA -- <http://www.truetex.com>  
boat\_bench.idw



Richard J Kinch, PhD -- Palm Beach County, Florida USA -- <http://www.truetex.com>  
 boat\_bench.idw





**UPHOLSTERY NOTES**

Back cushion is a single piece of 2" high-density foam (HDF). Top is 1" HDF. Outside bolsters are 1" HDF. Use 3M spray craft adhesive to adhere foam to wood frame and foam pieces to each other. Apply foam with overage, then cut to follow edges with electric kitchen carving knife. Fit back and outsides first, then top cover all top edges.

Over the foam, apply a slip of 2 mil (0.002 inch thick) polyethylene sheeting. This will improve the feel of the upholstery, and will resist soaking the foam if the finish upholstery is splashed.

Fasten slip and vinyl edges with 1/2" crown by 3/4" leg stainless (Monel alloy) staples using an Arrow T-50 stapler. Roll edges of material underneath itself before stapling to provide strain relief. Space staples closely, with about a crown width between each adjacent pair. Apply staples by bisecting unfastened intervals, so as to avoid creep and bunching.

Use marine-grade vinyl, 5/8" seam allowance, top stitched with 3/4" or 1" seam backing, or welted. Original factory pattern incorporates a racing stripe requiring pre-assembly.