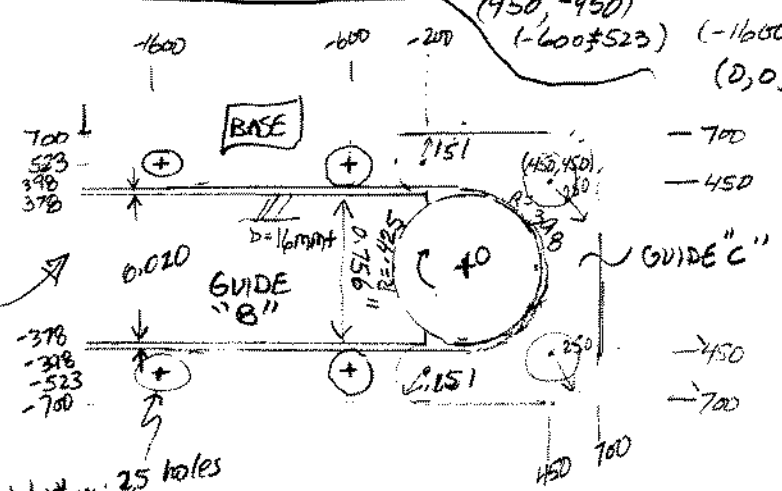
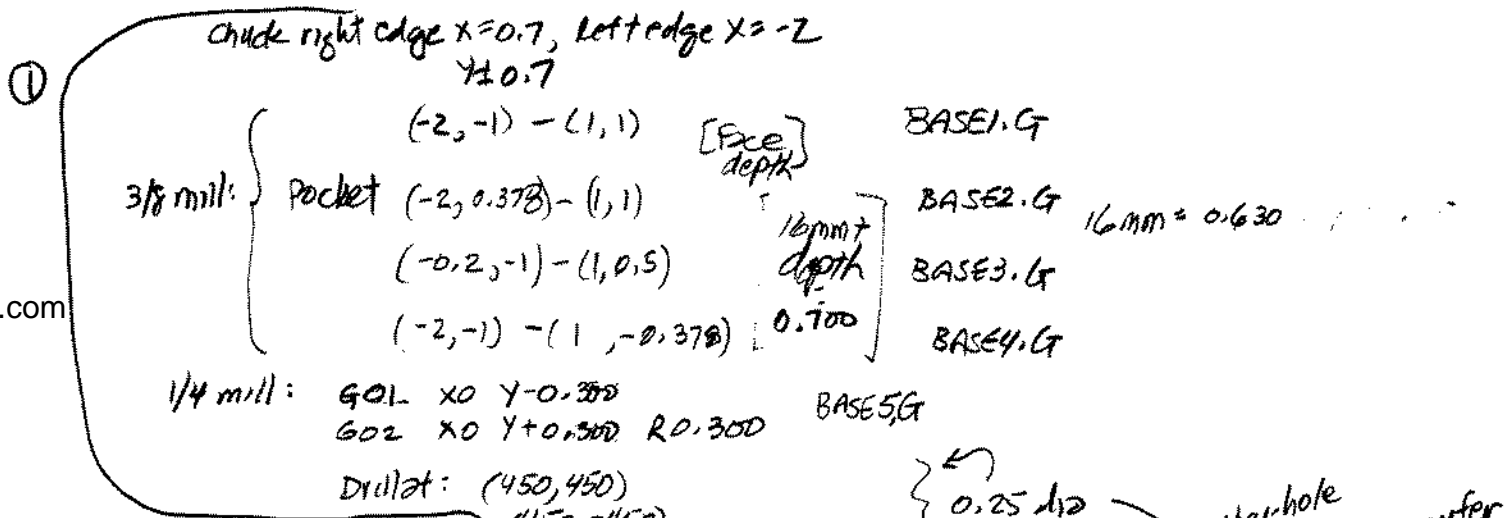


Spindle radius $\sim 7/8''$

Film transport sprocket guide
 RJK 2/16/2004 <http://www.truetex.com>



1x1 HDPE stock
 GUIDE "B"

CHUCK 1x1 w 3" ext.

BASE7.G: Face mill top + bottom of
 BASE8.G: Drill 2 alignment holes 1/4 mill + drill
 BASE9.G: cut off part at -2 in w/ 3/8 bit

